

# Assembly Instructions

## Addie Beam Connector Bracket



Thank you for purchasing the Addie Beam Connector Bracket.

After opening the boxes, please check the parts list to make sure all pieces have arrived in good condition. If you have any questions during this assembly process, please call Customer Service.



Scan QR code for  
Video Assembly  
Instructions



Assembly Time  
= 20 minutes



Assembly  
Requires 1-2  
Adults



### WARNING

- Serious injury (including permanent paralysis or death) could result from any activity involving motion, rotation or height.
- All users of this equipment assume this risk of serious injury.
- Mats and pits cannot and do not eliminate hazards.

### Safety Instructions

#### ALWAYS:

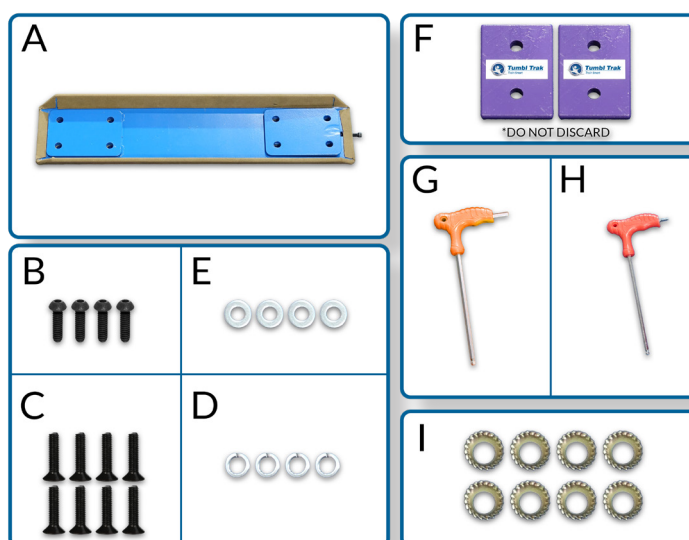
1. Consult an instructor prior to use.
2. Use equipment **ONLY** under the supervision of trained and equalified instructors.
3. Use equipment with trained spotters and the proper spotting equipment.
4. Check equipment before use for proper positioning; equipment can move during use.
5. Follow a progressive learning pattern. Assure basic skills are achieved before attempting more advanced skills.
6. Use equipment **ONLY** when all hard exposed surfaces are protected with proper mats.
7. Assure that all inflatable equipment has sufficient air pressure to avoid injury.

**DO NOT** use the apparatus with damaged, worn or missing parts.

**DO NOT** allow more than one person at a time to use the equipment.

## Parts List

- A. Suede-Covered Bracket
- B. (4) Button-head Bolts
- C. (8) Countersunk Bolts
- D. (4) Split Washer
- E. (4) Flat Washer
- F. (2) End Spacer
- G. 6mm Hex Wrench
- H. 5mm Hex Wrench
- I. (8) Star Washers



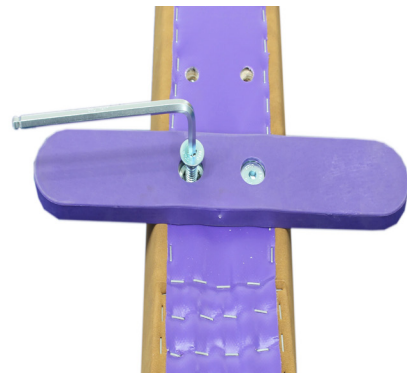
Any questions or problems, please call Tumbl Trak at +44 (0)2921 167949  
sales@tumbltrak.co.uk | tumbltrak.co.uk

*\*If starting with two brand new Addie Beams, skip to step 3.*

1. Place both previously assembled Addie Beams end to end and with the feet facing up.



2. Remove all four feet from the beams. Store old hardware safely for use when Addie Beams are NOT connected.

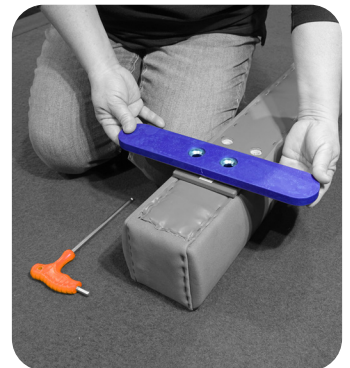


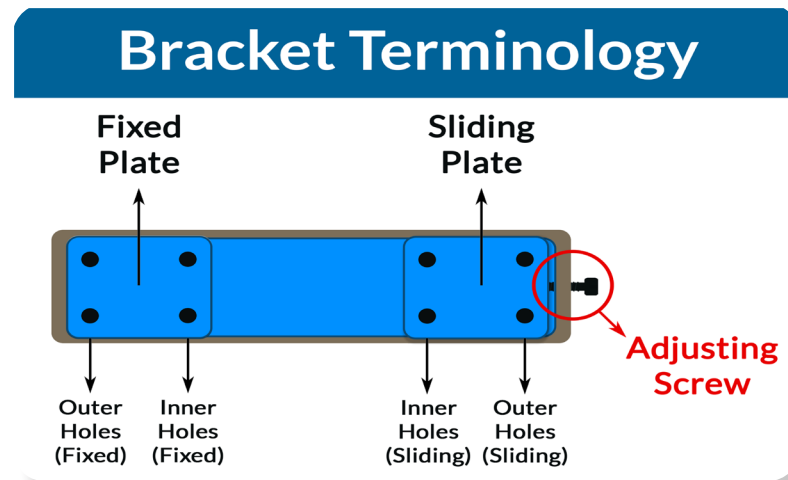
3. To reattach the outer feet, place one end spacer (F) on the outer screw holes. Place the foot onto the spacer, aligning the screw holes.

Insert and tighten two Countersunk Bolts (C) and Star Washers (I) using the **6mm Hex Wrench** (G).

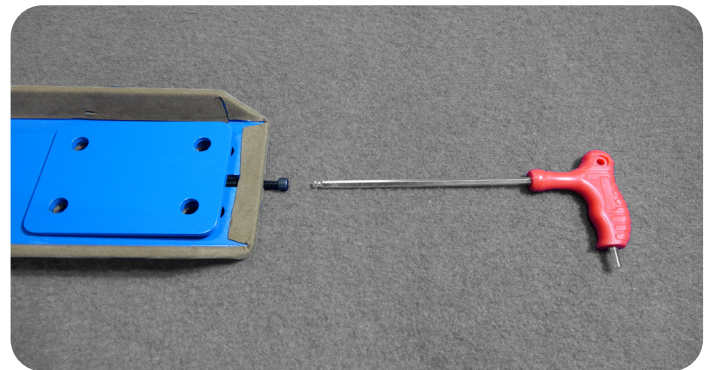
Do not overtighten.

4. Repeat step 3 on the opposite outer holes of the second Addie Beam.

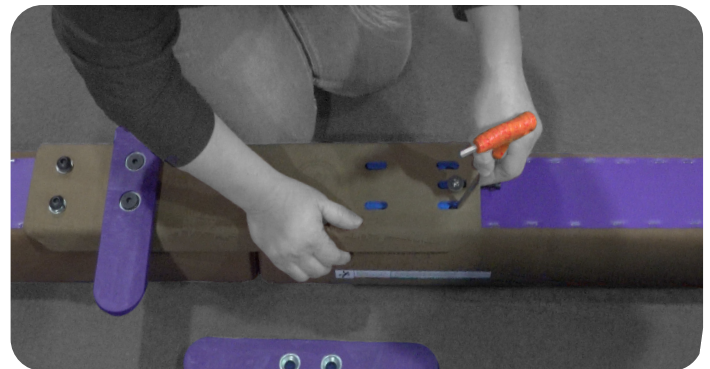




5. Unscrew the adjusting screw until the sliding plate can freely move from one end of the channel to the other.

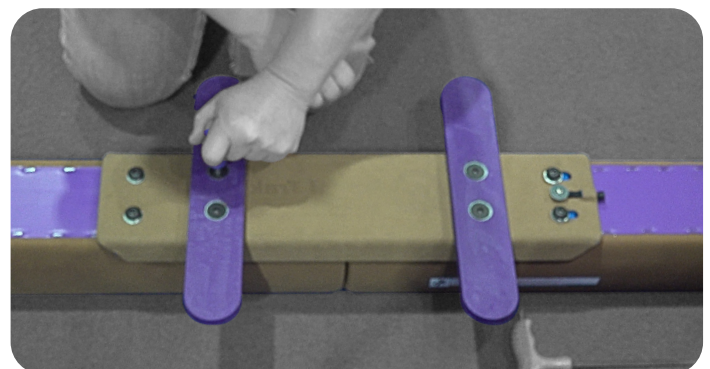


6. Align the Connector Bracket with the holes at the ends of the beams. Loosely screw the feet to the inner holes using the Counter-Sunk Bolts (C) and Star Washers (I). Place one Split Washer (D) and one Flat Washer (E) onto a Button head bolt (B) and loosely screw into the outer holes. **Do not tighten yet.**



*If the holes don't line up, use the long end of*

7. **Fully tighten** the four bolts on the fixed end of the bracket.





8. Tighten the adjustment screw with the **5mm Hex Wrench (H)** to pull the beams together. Stop tightening when the beams stop moving together or when the end of one beam begins to lift off of the floor.



*Photo on right shows how beam lifts from one end.*



9. Tighten all remaining bolts and ensure all components are secure with no wiggle. Lift one end of the beam to check the beam is fully secure.



## Troubleshooting Guide

**If the beam feels loose:**

- 1.) Loosen all 4 bolts on the **sliding plate**
- 2.) Tighten the adjusting screw further
- 3.) Re-tighten all 4 bolts on the sliding plate

10. Roll the two connected beams upright and enjoy your new 16-ft Addie Beam!



To watch the Addie Beam Connector Bracket in action, visit our website: [www.tumbltrak.co.uk](http://www.tumbltrak.co.uk)



**Tumbl Trak**  
Train Smart